



3

විදේශ සම්පත් දෙපාර්තමේන්තුව

6

வெளிநாட்டு வளங்கள் திணைக்களம்

Department of External Resources

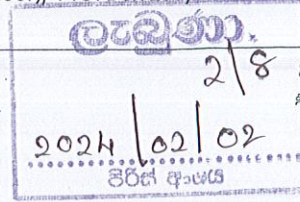
මුදල්, ආර්ථික ස්ථායීකරණ සහ ජාතික ප්‍රතිපත්ති අමාත්‍යාංශය
මහලේකම් කාර්යාලය (3වැනි මහල), තැ.පෙ. 277, කොළඹ 00100, ශ්‍රී ලංකාවநிதி, பொருளாதார உறுதிப்படுத்துதலை மற்றும் தேசியக் கொள்கைகள் அமைச்சு
செயலகம் (3ஆம் மாடி), த. பெ. இல. 277, கொழும்பு 00100, இலங்கைMinistry of Finance, Economic Stabilization and National Policies
The Secretariat (3rd Floor), P.O. Box 277, Colombo 00100, Sri Lanka

e-mail: info@erd.gov.lk

Web Site: www.erd.gov.lk

මගේ අංකය
எனது இல
My No

TA/JICA/L/70

ඔබේ අංකය
உமது இல
Your Noදිනය
திகதி
Date

26th January 2024

Secretary / Ministry of Environment

Secretary / Ministry of Public Administration, Home Affairs, Provincial Councils and Local Government

Attn: Officer In-charge of Foreign Trainings

Dear Sir,

JICA Long Term Training (Master's Programme) – on “Creating Leaders for Clean Cities”

Toyo University and Nagoya University

: September 2024 to September 2026

Hokkaido University

: September 2024 to March 2027

4/8
pts per 15h
in week
2/11

The Japan International Cooperation Agency (JICA) has requested us to submit nominations from eligible Government officials of Sri Lanka for the above programme. The GI Booklet and the Application Form submitted by JICA in this regard are enclosed for your information please. The application form and the programme details can be downloaded from the ERD website (<https://www.erd.gov.lk>)

We would highly appreciate, if necessary action can be taken to send suitable nominations from the relevant institutions under the purview of your ministry for the above program with the following documents;

1. The duly filled Application Form together with all Prescribed supporting documents stated in attached General Information (GI) booklet – (refer page No.7) **hand written applications will not be accepted**
2. Copy of the Passport
3. ERD Form

Please note that only the duly completed applications received by ERD before 2.00 p.m. on 15th February 2024, with the line ministry covering letter and other relevant documents as stipulated above, will be processed.

Your early response in this regard is highly appreciated.

Yours faithfully

W.D.R. Crishantha

Director

for Director General

Copies to:

The Chairman, Central Environmental Authority

The Director General, National Solid Waste Management Support Centre

Chief Secretaries, All Provincial Councils

Pl. send nominations
with recommendations
of the relevant line
Ministry.

අධ්‍යක්ෂ ජනරාල්

பணிப்பாளர் தாயகம்
Director General

94-11-2484693

කාර්යාලය

அலுவலகம்
Office

94-11-2484500

94-11-2484600

ලැබීම් අංකය

தொலைபேசி
Fax

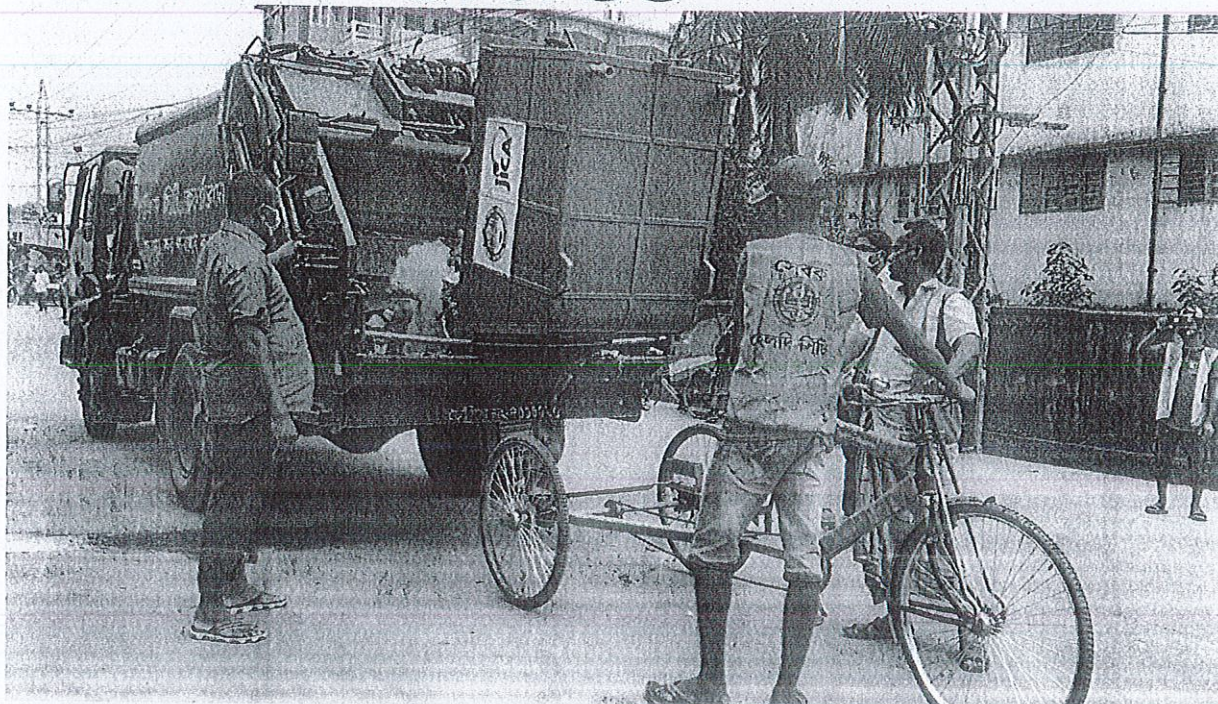
94-11-2447633

94-11-2387153

94-11-2434876

JICA Knowledge Co-Creation Program (Master Degree Scholarship Program)

Creating Leaders for Clean Cities



Course Period in Japan:

from September 2024 to September 2026

Or

from September 2024 to March 2027

This handout provides an overview of the course, which is one of Japan International Cooperation Agency (JICA)'s Knowledge Co-Creation Program (Long-Term). The program will be implemented as part of the Official Development Assistance of the Government of Japan based on bilateral agreement between respective governments.

The objective of the Knowledge Co-Creation Program (Long-Term) is to offer opportunities to people from developing countries to study at higher educational institutions in Japan and to help them build their network of people. This is intended to assist in the human resource development plans of the governments of developing countries and Japan, and eventually to expand and strengthen bilateral ties between the developing countries and Japan.



Deadline of KCCP application in
JICA Sri Lanka office is 15/02/2024

Creating Leaders for Clean Cities

In many cities, the problem of waste management including limited collection service and inappropriate disposal is getting more and more serious along with the rapid urbanization and population influx. To sustain appropriate waste management, the consolidation of human and organizational capacity and financial sustainability is the key. However, for developing countries, where waste management is not given high priority in policy agenda, fostering human resources who will lead effective improvement of the sector is always the challenge. To contribute to the creation of clean cities, JICA is conducting the cooperation of improvement of the competence of administrative organizations under the “JICA Clean City Initiative (JCCI)”. This program is designed to promote appropriate solid waste management (SWM) through enhancement of human and organizational capacity of the countries. To this end, in cooperation with other programs such as J-PRISM and ACCP, this program provides opportunities to participants to study in Japan to deepen knowledge and enhance their capacity for planning and management of SWM.

The objective of the program is

to strengthen capacity of potential future leaders who will engage in SWM in national/central government and/or cities of the target countries. The graduates of the program are expected to lead improvement of SWM of their countries/cities to promote appropriate SWM and thereby contribute to achievement of the SDGs.



For what?

The graduates of the program are expected to lead their organizations and the SWM sector of their countries to achieve better and sustainable waste management by developing following capacities;



How?

Problem-Solving Capacity

- Identify, analyze, and solve the issues logically
- Write and present thesis
- Understand and interpret the experiences of other SWM and apply them to own case

Comprehensive Knowledge of SWM administration and management

- Comprehensive capacity of utility management in theory and practice

Long-term ties and Networks

- Networks with participants from other countries, Japanese SWM professionals and students.
- Partnerships with Japanese SWM enterprises.

This program is a Master Degree Scholarship Program provided by JICA in collaboration with partner university of JICA Development Studies Program in Japan. Participants will pursue Master's Degree under distinguished professors in Graduate School. Special programs will also be offered to improve practical abilities, develop networks, and deepen understanding of Japanese SWM field.

Language used in the Program

English

Degree & Certificate

Master's degree from Japanese University and a certificate by JICA will be awarded upon successful completion of the program.

Where?

Participants will be admitted to one of the following three universities to obtain a master's degree.

Location: Sapporo

Hokkaido University (National)

Course in Global Environmental Management

Graduate School of Environmental Science

Degree: Master of Environmental Science

Course URL: [Course in Global Environmental Management](https://www.ees.hokudai.ac.jp/kigaku/?page_id=2598)

https://www.ees.hokudai.ac.jp/kigaku/?page_id=2598

URL: [Hokkaido University \(hokudai\)](https://www.hokudai.ac.jp/)

Location: Tokyo

Toyo University (Private)

Course of Regional Development Studies,
Graduate School of Global and Regional Studies

Degree: Master of Regional Development Studies

Course URL: [Course of Regional Development Studies](https://www.toyo-u.ac.jp/regional-studies/) | [Official Site of Toyo University Regional Studies](https://www.toyo-u.ac.jp/regional-studies/)

URL: [Toyo University Official Site](https://www.toyo-u.ac.jp/)

Location: Nagoya

Nagoya University (National)

Department of Environmental Engineering and Architecture,
Graduate School of Environmental Studies

Degree: Master of Environmental Studies or Master of Engineering

Department of Civil and Environmental Engineering,
Graduate School of Engineering

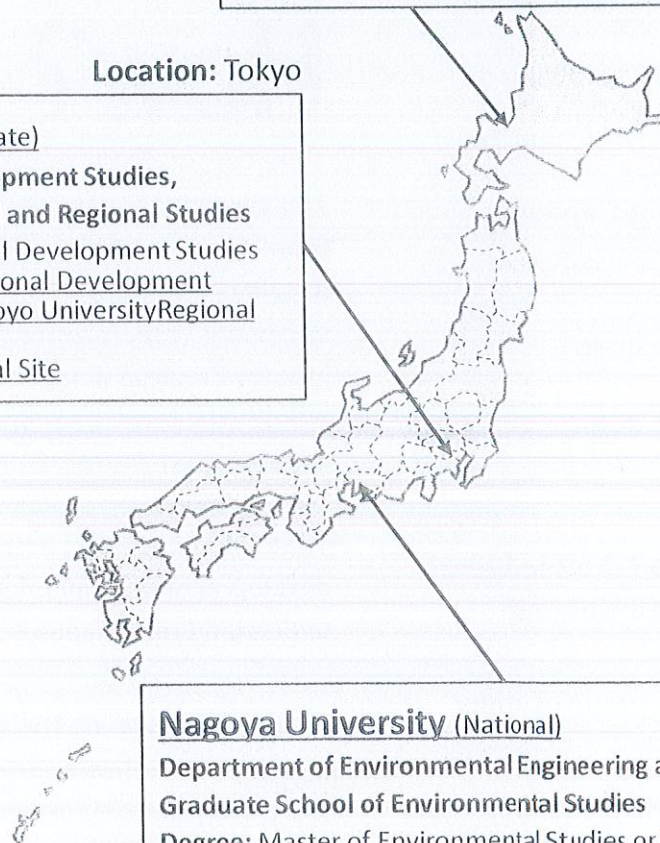
Degree: Master of Engineering

Department URL including list of prospective supervisors in

both graduate schools: [research of CEEIPO \(nagoya-u.ac.jp\)](https://www.civil.nagoya-u.ac.jp/ceeipo/)

https://www.civil.nagoya-u.ac.jp/ceeipo/_src/8911/Lab_list.pdf

URL: [Nagoya University](https://www.nagoya-u.ac.jp/)



Program Outline

The program consists of a regular graduate program for study and research in the field of utility administration and management at a Japanese university and additional custom-made programs shown below:

1. Master Degree Program

- 1 Acquire theoretical knowledge by course work.
- 2 Acquire problem-solving capacity through field survey and research on practical topics.
- 3 Acquire master's degree in Graduate School.

2. Special Programs on SWM

Lectures	Field Survey / Field Trips	Others
Additional special lectures on; <ul style="list-style-type: none"> ◦ Japan's historical experience to achieve sustainable collection, recycling and disposal ◦ Case study of Japanese SWM 	<ul style="list-style-type: none"> ◦ Field survey in Japan and/or home county for Master's thesis. ◦ Field trips to sites of SWM and industries 	<ul style="list-style-type: none"> ◦ Networking with participants from other countries and Japanese SWM professionals. ◦ International conference and symposiums. ◦ JICA's other training programs.

3. Common Programs (Optional)

JICA will offer the Common Programs for all JICA scholarship students such as;

- Special lectures and field trips on Japanese development experiences
- International cultural exchange among JICA scholarship students.

For whom?

Countries	Indonesia	India
	Honduras	Sri Lanka
	Palestine	

Eligible / Target Organization

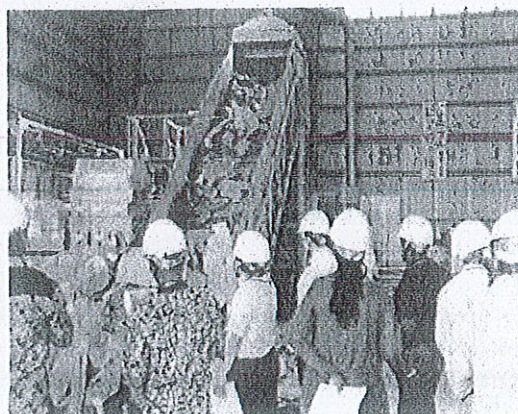
Public officers who are expected to play a leading role in SWM in their organizations/countries.

Qualifications

- **Experience**
at least three (3) years of practical experiences in SWM
- **Age**
under 39 years old as of April 1st, 2024 (if not, consult with JICA overseas)
- **Educational Background**
have a bachelor degree or higher
- **Language**
have sufficient English skills required to take courses and receive research guidance in English (TOEFL iBT 80/ TOEFL PBT 550/ IELTS 6.0 or higher)
- **Health**
in good health both physically and mentally, to participate in the program in Japan

Expectation for Participants

- To play a leading role in SWM in their organizations/countries in the future
- To have adaptability and receptivity to study and research in a foreign country



Admissions

Candidates must be selected as JICA's official candidate through JICA's internal selection procedure and must pass the general entrance examination of the university they have applied to, including examinations to enter the applicants' desired master's degree course.

Number of participants

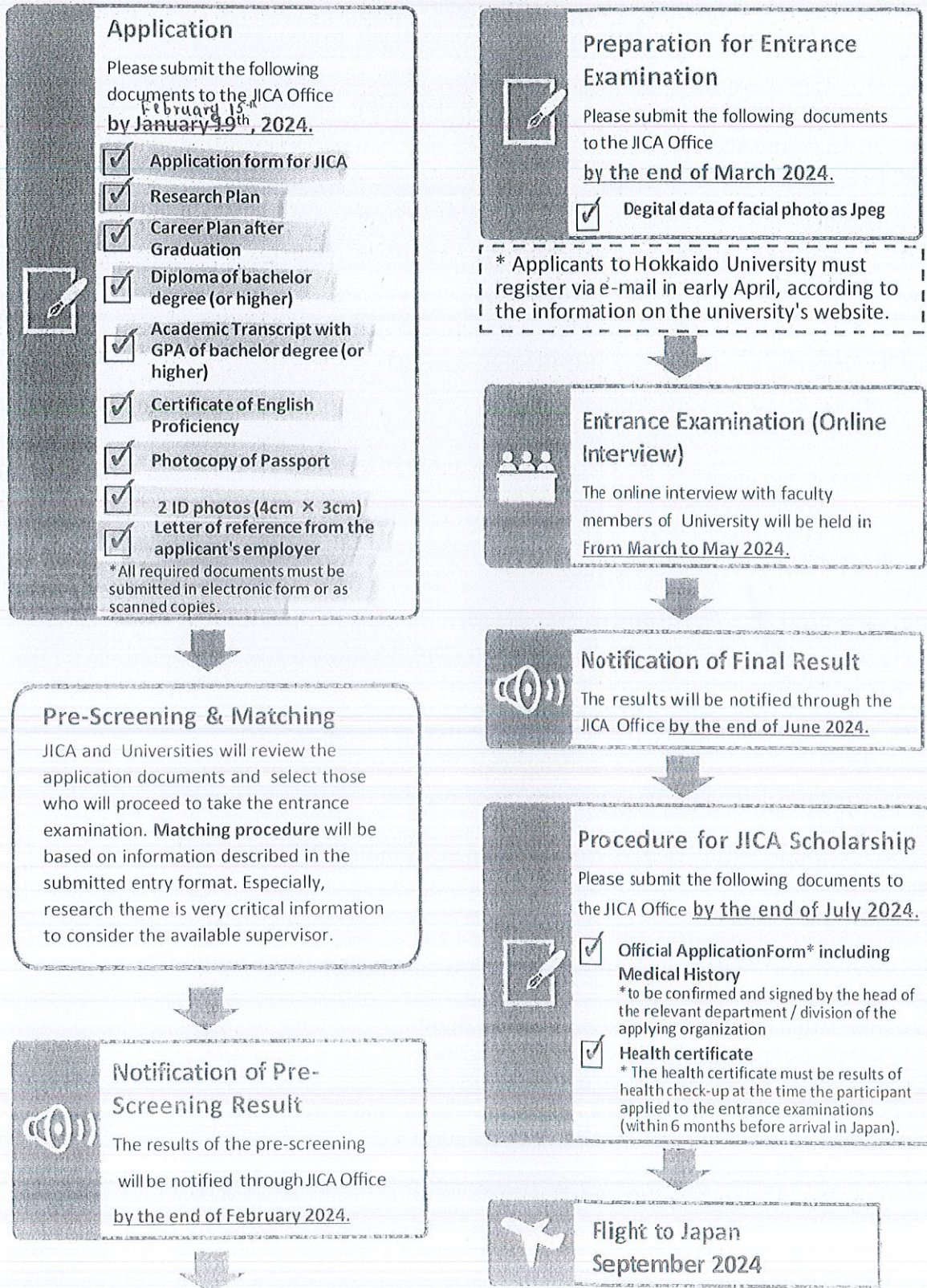
- Maximum 7 participants

When?

Duration

- **Toyo Univ. & Nagoya Univ.**
from September 2024 to September 2026
- **Hokkaido Univ.**
from September 2024 to March 2027
(For the first six months, the status will be that of a non-degree "research student". In order to become a student of the regular course (master's course), you must pass the entrance examination after enrollment.)

Steps to Japan



Expenses To Be Borne By JICA

Under the JICA Long-term Participant Allowance standards, JICA will cover expenses and allowance to participants accepted to the program/course. See the table below for further details. Note that the payments (e.g. for tuition, research support expenses, school support expenses) will not be paid to the accepted participants themselves, but directly to the university or other relevant institutions.

Expense category	Payment amount	Payment frequency
Tuition (official examination fees, entrance fees, course fees)	Actual costs	According to the request from universities
Living Allowance*	JPY 144,000–147,000 per month*	Every month via university
Airfare	Actual costs	Upon arrival in Japan and upon returning home
Outfit Allowance**	JPY103,750–106,000	Once (upon arrival in Japan)
Moving Allowance***	Up to JPY164,000–224,000	Once (during the training period)**
Research Support Expenses****	Actual costs (up to JPY360,000 per year)	
Medical care for participants who become ill after arriving in Japan	In accordance with the provisions of the medical insurance	

Expenses Not To Be Borne By JICA

JICA will not bear costs other than the allowances described above. JICA is not responsible for the following expenses especially:

- (1) Passport fees (for re-issuance and extensions, etc.)
- (2) Visa fees of a transit country and transportation expenses to obtain Visa
- (3) Transportation expenses to obtain Japanese Visa
- (4) Domestic travel expenses at the applicant's home country
- (5) Departure tax
- (6) Airport tax/airport facility charges outside of Japan, including third countries
- (7) Customs duty
- (8) Excess baggage charges
- (9) Compensation for lost and/or damaged baggage
- (10) "No show charge" to the transit airport hotel (non-refundable)
- (11) Lost - ticket fee
- (12) Accommodation fee for day-use hotel in return flight
- (13) Transportation expenses other than official programs
- (14) Telephone bill or mini-bar tab at accommodation
- (15) Medical costs related to pre-existing illness, pregnancy, and dental treatment
- (16) Medical cost related to the same illness over 180 days
- (17) "National Health Insurance" fee

Note: If participant/accepted applicant does not follow the regulation of JICA, the participant may have to bear such other cost of necessary expenses.

*Varies according to living area in Japan, type of accommodation, etc.

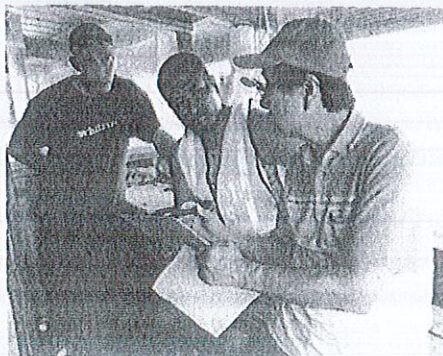
**Once, after opening bank account in Japan. As it takes several weeks to have the bank account opened, it is strongly recommended to bring cash for personal expenses during the period.

***Depending on the accommodation facility. Consultation with the university is required.

****Research Support Expenses are allowed to be provided via the university and be disbursed with the consultation and approval of the applicant's supervisor.

Important Notice

- Participants are not allowed to work while their stay in Japan.
- To invite family to Japan (spouse and children only), participants should be responsible for all expenses and necessary procedure. JICA does NOT provide any support or additional financial assistance except issuing necessary documents for the process.
JICA strongly recommend participants to invite their family at least after 6 months upon arrival in Japan.
- Participants are recommended to bring their own laptops. Participants are required to work on their laptops during their stay in Japan. Most of accommodations have internet access. Expenses for purchasing and fixing laptops will NOT be borne by JICA. Participants who do not have their own laptops are recommended to purchase one with their moving allowances.
- Visa will be arranged and issued in participants' respective countries. If participants have difficulty to apply in their countries, it will be applied and issued in Japan



Conditions for Participation

The accepted applicants/participants of Knowledge Co-Creation Program (KCCP) are required:

- (1) to understand that participants must physically come to Japan to participate in this program at the date designated by JICA,
- (2) to be in good health to participate in the program,
- (3) not to change course subjects or extend the course period,
- (4) not to change the air ticket (and flight class and flight schedule arranged by JICA) and lodging by the participants on their own,
- (5) to accept that the Government of Japan will examine applicants who belong to the military or other military-related organizations and/or who are enlisted in the military, taking into consideration of their duties, positions in the organization and other relevant information in a comprehensive manner to be consistent with the Development Cooperation Charter of Japan,
- (6) to submit a Health Certificate in JICA format at the participant's expense. The certificate must be the results of health check-up at the time the participant applied to the entrance examinations (within 6 months before arrival in Japan),
- (7) to accept to submit a second Health Certificate in JICA format if the participant will not be able to arrive within 6 months from the date of his/her first medical examination. The cost of the Health Certificate will be borne by JICA only if the delay is not due to the participant's personal reasons,
- (8) to return to their home country on the designated flight by JICA, when they finish the program/course or when it is deemed impossible to finish the program within the program period, or when the participant is not successful on the regular course examination,
- (9) to refund allowances or other benefits paid by JICA in the case of a change in schedule,
- (10) to understand that inviting participant's family members is not recommended before their stay in Japan has passed more than 6 months,
- (11) to carry out such instructions and abide by such conditions as may be stipulated by both the nominating Government and the Japanese Government in respect of the course,
- (12) to observe the rules and regulations of the program implementing partners to provide the program or establishments ("Plagiarism" especially is taken severely by enrolling university, regardless of whether it is direct plagiarism or self-plagiarism and participants may be subjected to disciplinary action such as suspension),
- (13) to observe the rules and regulations at the place of the participants' accommodation,
- (14) not to engage in political activities, or any form of employment for profit,
- (15) not to drive a car or motorbike, regardless of an international driving license possessed,
- (16) to discontinue the program, should the participant violate Japanese laws or JICA's regulations, or commit illegal or immoral conduct, or become critically ill or seriously injured and be considered unable to continue the course. The participants shall be responsible for paying any cost for treatment of the said health conditions except for the medical care expenses described in the table of "11. Expenses To be borne by JICA,"
- (17) to return the total amount or a part of the expenditure for KCCP depending on the severity of such violation, should the participants violate the laws and ordinances,
- (18) not to be receiving nor plan to receive another scholarship during the program,
- (19) to understand not to make other applications for different JICA KCCP (long-term) at the same time,
- (20) to understand that the maximum duration of "Overseas research" and "Temporary Leave (leaving Japan for private purpose)" is 60 days, in principle, and
- (21) to enroll and complete JICA-DSP online courses, when you receive JICA's instructions to do so.

What is JICA Knowledge Co-Creation Program (KCCP)

The Japanese Cabinet released the Development Cooperation Charter in February 2015, which stated, "In its development cooperation, Japan has maintained the spirit of jointly creating things that suit partner countries while respecting ownership, intentions and intrinsic characteristics of the country concerned based on a field-oriented approach through dialogue and collaboration. It has also maintained the approach of building reciprocal relationships with developing countries in which both sides learn from each other and grow and develop together." JICA believes that this 'Knowledge Co-Creation Program' will serve as a foundation of mutual learning process.

What is JICA Development Studies Program (JICA-DSP)

JICA-DSP is being carried out by JICA as part of official development assistance (ODA) by the government of Japan. JICA-DSP is offered for international scholars accepted as the participants of JICA's Human Resource Development Project who are enrolled in a degree program at a Japanese university.

<https://www.jica.go.jp/dsp-chair/english/dsp/overview/index.html>

For Your Reference

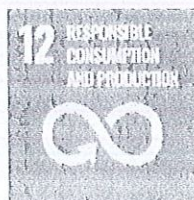
Leaflet: JICA's Actions Toward Achieving SDGs
[click here!](#)

SUSTAINABLE DEVELOPMENT GOALS

JICA's Position Paper on SDGs: Goal 11
[click here!](#)



JICA's Position Paper on SDGs: Goal 12
[click here!](#)



website: African Clean Cities Platform
[click here!](#)



textbook: Waste in Africa
[click here!](#)



RESEARCH & POLICY STUDIES
DATA BOOK 2019



About JICA

JICA and Capacity Development

The key concept underpinning JICA operations since its establishment in 1974 has been the conviction that capacity development is central to the socioeconomic development of any country, regardless of the specific operational scheme one may be undertaking, i.e. expert assignments, development projects, development study projects, training programs, JOCV programs. Within this wide range of programs, Training Programs have long occupied an important place in JICA operations. Conducted in Japan, they provide partner countries with opportunities to acquire practical knowledge accumulated in Japanese society. Participants dispatched by partner countries might find useful knowledge and re-create their own knowledge for boosting their own capacity or that of the organization and society to which they belong. About 460 pre-organized programs cover a wide range of professional fields, ranging from education, health, infrastructure, energy, trade and finance, to agriculture, rural development, gender mainstreaming and environmental protection. A variety of programs are being customized to address the specific needs of different target organizations, such as policy-making organizations, service provision organizations, as well as research and academic institutions. Some programs are organized to target a certain group of countries with similar developmental challenges.



Japanese Development Experience

Japan was the first non-Western country to successfully modernize its society and industrialize its economy. At the core of this process, which started more than 140 years ago, was the "adopt and adapt" concept by which a wide range of appropriate skills and knowledge have been imported from developed countries; these skills and knowledge have been adapted and/or improved on using local skills, knowledge and initiatives. They finally became internalized in Japanese society to suit local needs and conditions.

From engineering technology to production management methods, most of the know-how that has enabled Japan to become what it is today has emanated from this "adoption and adaptation" process, which, of course, has been accompanied by countless failures and errors behind the success stories. We presume that such experiences, both successful and unsuccessful, will be useful to our partners who are trying to address the challenges currently faced by developing countries.

However, it is rather challenging to share with our partners this whole body of Japan's developmental experience. This difficulty has to do, in part, with the challenge of explaining a body of "tacit knowledge," a type of knowledge that cannot fully be expressed in words or numbers. Adding to this difficulty are the social and cultural systems of Japan that vastly differ from those of other Western industrialized countries, and hence still remain unfamiliar to many partner countries. Simply stated, coming to Japan might be one way of overcoming such a cultural gap.

JICA, therefore, would like to invite as many leaders of partner countries as possible to come and visit us, to mingle with the Japanese people, and witness the advantages as well as the disadvantages of Japanese systems, so that integration of their findings might help them reach their developmental objectives.



CORRESPONDENCE

For enquiries and further information,
please contact the JICA office in your country.

Further, address correspondence to:

Japan International Cooperation Agency (JICA)

Address: Nibancho Center Building 5-25 Niban-cho,

Chiyoda-ku, Tokyo 102-8012, Japan

TEL: +81-3-5226-6603 (Rep.)



Japan International Cooperation Agency

【長期研修】(2022 年 9 月版)

CONFIDENTIAL

Knowledge Co-Creation Program under Technical Cooperation with the Government of Japan

**Application Form for the JICA Knowledge Co-Creation Program
for Long-Term Participants
(JICA Development Studies Program)**

OFFICIAL APPLICATION FORM

(to be confirmed and signed by the head of the relevant department / division of the applying organization)

1. Course Title: (Please write down as shown in the General Information)

Creating Leaders for Clean Cities

2. Course Number: (the number as "xxxxxxxxJxxx" shown in the GI)¹

									J			
--	--	--	--	--	--	--	--	--	---	--	--	--

3. Country Name:

--

4. Name of Applying Organization:

--

5. Name of the Nominee(s):

1)	3)
2)	4)

Our organization hereby applies for Knowledge Co-Creation program (KCCP) of the Japan International Cooperation Agency and proposes to dispatch qualified nominees to participate in the programs.

Date:	Signature:		
Name:			
Designation / Position			Official Stamp
Department / Division			
Office Address and Contact Information	Address:		
	Telephone:	Fax:	E-mail:

Confirmation by the organization in charge (if there is no Note Verbale/ Letter from the government nominating the applicant)²

I have examined the documents in this form and found them true. Accordingly I agree to nominate this person(s) on behalf of our government.

Date:	Signature:		
Name:			
Designation / Position			Official Stamp
Department / Division			

¹ 研修員決定決裁後に KCCP システムでの研修コース登録を行う場合は記載不要。

² 署名又は代替書類は必須であり、いずれも無い場合、研修員の受入、来日手続きが不可となるため留意すること。



Part A: Information on the Applying Organization³

(to be confirmed by the head of the department / division)

1. Profile of Organization

1) Name of Organization:

2) The mission of the Organization and the Department / Division:

2. Purpose of Application

1) Current Issues: Describe the reasons for your organization claiming the need to participate in Knowledge Co-Creation Program (KCCP), with reference to issues or problems to be addressed.

2) Objective: Describe what your organization intends to achieve by participating in KCCP.

3) Future Plan of Actions: Describe how your organization shall make use of the expected achievements, in addressing the said issues or problems.

4) Selection of the Nominee: Describe the reason(s) the nominee has been selected for the said purpose, referring to the following view points; 1) Course requirement, 2) Capacity /Position, 3) Plans for the candidate after the KCCP, 4) Plan of organization and 5) Others.

³ 研修コース特性に応じ任意記載

健康診断書

CERTIFICATE OF HEALTH (to be completed by the examining physician)

日本語又は英語により明瞭に記載すること。

Please fill out (PRINT/TYPE) in Japanese or English. Do not leave any items blank.

氏名
Name :

☐ 男 Male
☐ 女 Female
☐ その他 Non-binary

生年月日
Date of Birth :

年齢
Age :

Family name, First name Middle name

1. 身体検査 Physical Examinations

(1) 身長 _____ cm 体重 _____ kg
Height Weight

(2) 血圧 _____ mm/Hg ~ _____ mm/Hg 血液型 _____
Blood pressure Blood Type

ABO	RH	+

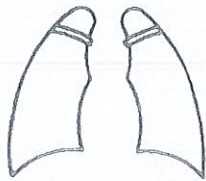
脈拍数 _____ /min ☐ 整 regular
Pulse Rate ☐ 不整 irregular

(3) 視力 Eyesight : (R) _____ (L) _____
裸眼 without glasses 矯正 with glasses or contact lenses

(4) 聴力 ☐ 正常 normal 言語 ☐ 正常 normal
Hearing : ☐ 低下 impaired speech : ☐ 異常 impaired

(5) 色覚異常の有無 Color blindness : ☐ 正常 normal ☐ 異常 impaired

2. 申請者の胸部について、聴診とX線検査の結果を記入してください。X線検査の日付も記入すること (6ヶ月以上前の検査は無効。) Please describe the results of physical and X-ray examinations of applicant's chest x-ray (X-ray taken more than 6 months prior to the certification is NOT valid).



肺
lung: ☐ 正常 normal
☐ 異常 impaired

Date _____
Film No. _____

心臓
Cardiomegaly: ☐ 正常 normal
☐ 異常 impaired

心電図
Electrocardiograph
☐ 正常 normal ☐ 異常 impaired

胸部聴診(呼吸音) Chest auscultation (breath sound)
☐ 正常 normal ☐ 異常 impaired
Examinations of the neck (inspection, palpation)
☐ 正常 normal ☐ 異常 impaired

Describe the condition of applicant's lung. _____

3. 現在治療中の病気 ☐ Yes (Disease: _____ Medicine: _____) Disease & Treatment at Present ☐ No

4. 既往症 Past history : Please indicate with + or - and fill in the date of recovery.
Tuberculosis ☐ (. . .) Malaria ☐ (. . .) Measles ☐ (. . .)
Epilepsy ☐ (. . .) Kidney disease ☐ (. . .) Heart diseases ☐ (. . .)
Diabetes ☐ (. . .) Drug allergy ☐ (. . .) Psychosis ☐ (. . .)
Functional disorder in extremities ☐ (. . .) Others ☐ (. . .)
Rheumatic fever ☐ (. . .) Hepatitis ☐ (Type: A, B, C, D, E) (. . .)
Immunodeficiency (HIV, Chronic Kidney Failure, a Malignant Tumor) ☐ (. . .)
Immunosuppressant (Adrenocorticosteroid, Anticancer, Anti rheumatic drug) ☐ (. . .)

5. ワクチン接種歴 Vaccination history
MMRV (Measles, Mumps, Rubella, Zoster) ☐ Time(s) () Mumps ☐ Time(s) () Hepatitis B ☐ Time(s) ()
MMR (Measles, Mumps, Rubella) ☐ Time(s) () Chicken pox ☐ Time(s) () Meningitis ☐ Time(s) ()
MR (Measles, Rubella) ☐ Time(s) () Polio ☐ Time(s) ()
M (Measles) ☐ Time(s) () Diphtheria Pertussis Tetanus combined ☐ Time(s) ()

6. 検査 Laboratory tests
検尿 Urinalysis: glucose (), protein (), occult blood () ・ 検便 Feces: Parasite (egg of parasite) (+, -)
赤沈 ESR : _____ mm/Hr, WBC count : _____ x10³/μl, Hemoglobin: _____ g/dl, ALT: _____ u/l
貧血検査 Anemia Test: ESR : _____ mm/Hr, WBC count : _____ /cmm, Hemoglobin: _____ gm/dl, Anemia: _____
肝機能検査 LFT : GPT/ALT : _____ (IU/L), GOT/AST : _____ (IU/L), γ-GTP : _____ (IU/L)

7. 診断医の印象を述べて下さい。 Please describe your impression. 継続的治療・投薬の必要性があればその旨ご記入ください。 Please fill in if applicant needs regular medication or treatment.

8. 志願者の既往歴、診察・検査の結果から判断して、現在の健康の状況は十分に留学に耐えうるものと思われますか?
In view of the applicant's history and the above findings, is it your observation his/her health status is adequate to pursue studies in Japan?
yes ☐ no ☐

日付 署名
Date: Signature: _____

医 師 氏 名
Physician's Name in Print: _____

検査施設名
Office/Institution: _____

所在地
Address: _____

MEDICAL HISTORY

(Self-Declaration)

1. Present Medical Status

(a) Have you taken any medicine or had a medical checkup by a physician for your illness such as diabetes, hypertension, asthma, etc.?

<input type="checkbox"/> No	<input type="checkbox"/> Yes: Name of illness (), Name of medicine () <i>If yes, please attach your doctor's letter (preferably, written in English) that describes the current status of your illness, and gives agreement to your participation in the program.</i>
-----------------------------	---

(b) Do you have any allergies with medicine, food, pollen, etc.?

<input type="checkbox"/> No	<input type="checkbox"/> Yes: What are you allergic to? What kind of allergic symptoms do you have such as itch, rash, hives, etc.? ()
-----------------------------	---

(c) Please indicate any needs arising from disabilities that may require additional support or facilities.

()
<i>Note: Disability will not lead to exclusion of the Applicant from the program. However, the Applicant may be directly inquired by the JICA official in charge for a more detailed account of his/her condition.</i>

2. Medical History

(a) Have you had any illness such as heart, hepatic, kidney disease, etc.?

<input type="checkbox"/> No	<input type="checkbox"/> Yes: Please specify ()
-----------------------------	---

(b) Have you ever been a patient in a mental clinic or been treated by a psychiatrist?

<input type="checkbox"/> No	<input type="checkbox"/> Yes: Please specify ()
-----------------------------	---

(c) Have you ever had any sleeping, eating or other disorders?

<input type="checkbox"/> No	<input type="checkbox"/> Yes: Please specify () Name of medicine taken if any ()
-----------------------------	--

3. Tuberculosis Screening

(a) Do you have any history of previous TB?

<input type="checkbox"/> No	<input type="checkbox"/> Yes: Please specify ()
-----------------------------	---

(b) Has anyone in your household been diagnosed with TB in the last 2 years?

<input type="checkbox"/> No	<input type="checkbox"/> Yes: Please specify ()
-----------------------------	---

(c) Do you have any history of recent contact with a case of active pulmonary TB (shared the same enclosed airspace or household or other enclosed environments for a prolonged period for days or weeks)?



<input type="checkbox"/> No	<input type="checkbox"/> Yes: Please specify ()
-----------------------------	---

(d) Do you have any history of or are you currently immune compromised (HIV infected, chronic renal failure, malignant tumors, etc.)? Do you have any history of using immunosuppressant (steroids, anti-cancer drugs, rheumatic drugs, etc.)?

<input type="checkbox"/> No	<input type="checkbox"/> Yes: Please specify ()
-----------------------------	---

(e) Have you (or your household) had any of the following symptoms in the last three months?

<input type="checkbox"/> No	<input type="checkbox"/> Yes: <input type="checkbox"/> Cough <input type="checkbox"/> Sputum expectoration <input type="checkbox"/> Hemoptysis <input type="checkbox"/> Night sweats <input type="checkbox"/> Weight loss <input type="checkbox"/> Fever
-----------------------------	--

4. Other Conditions/Medical Issues

Are you pregnant?

<input type="checkbox"/> No	<input type="checkbox"/> Yes: Weeks of pregnancy () weeks
-----------------------------	---

If you have any medical issues/conditions that are not described above, please indicate below.

I certify that I have read the above instructions and answered all questions truthfully and completely to the best of my knowledge.

I understand and accept that medical conditions resulting from an undisclosed pre-existing condition may not be financially compensated by JICA and may result in termination of the program.

I understand and accept that this questionnaire will be checked for my health care by the people who are engaged in the program during my stay in Japan.

By Applicant

Date

Name and
Title/Position

Signature

※Please notify JICA staff upon any changes in your health condition after submission of the form.



Application Guideline for the JICA Knowledge Co-Creation Program

This guideline explains how to apply for the Knowledge Co-Creation program (KCCP) of the Japan International Cooperation Agency (JICA) under the Official Development Assistance Program of the Government of Japan.

Please complete the Application Forms according to the guideline. For additional information, please consult the JICA Office, or in its absence, the Embassy of Japan in your country.

Form	Filled by
Official Application Form	<ul style="list-style-type: none">• To be filled by you and your supervisor*• To be signed by your supervisor• Official stamp of your organization is needed.
Information on the Applying Organization	You and your supervisor *
Information about the Nominee	You
Terms and Conditions, and Declaration	You

*Supervisor: the head of the department/division of your organization

Please be advised:

- To carefully read the Overview of the KCCP,
- To fill only in typewritten except for signature,
- To fill in the form in English,
- To use "√" or "x" to mark the () options,
- To attach your photographs,
- To prepare document(s) described in the Overview and/or confer with the JICA Expert or JICA overseas office, and attach these documents to the completed Application Forms,

In submitting the Application Forms and attached documents, please make sure:

- To prepare a copy of your passport,
- To confirm the application procedure stipulated by your government,
- To submit the original Application Forms with all necessary document(s) to the responsible organization of your government according to its application procedure, and
- That your participation may be denied, if you fail to provide all required information and documents completely and on time.

**CONFIDENTIAL****CHECK LIST before submission:**

Applicant's Name: _____

Please enclose this checklist in your application. Please be sure to submit all the following documents check(□) the items you enclosed. In case you are not able to submit any document by the deadline, please write the estimated date you will be able to submit.

Application documents to JICA	Check(□)	Check point
1 Application materials check list	<input type="checkbox"/>	Are all documents attached?
2 JICA Application Form for Knowledge Co-Creation Program	<input type="checkbox"/>	Is the full name written as shown on the Passport? (National ID is acceptable if the applicant does not own a Passport.)
		Is the date of birth same as on the Passport or ID?
		Is your age between 22 to 39? (if not, consult with JICA overseas office in your country)
		Is the name of organization, department, and position correctly mentioned? (No abbreviation is allowed)
		Is the working history and period correctly filled?
		Is the name of the degree same as in the "University Diploma" and "Academic Transcript"?
		In the Declaration Form, is the signed date within the application
Information about the Nominee 1. University Information 2. Research Plan 3. Career Plan after Graduation	<input type="checkbox"/>	Is the research plan written with enough amount of words? (Extreme lack of words may not be accepted)
3 Graduation certificate	<input type="checkbox"/>	Is the "Title", "Introduction", "Main Body" and "Conclusion", respectively followed?
		Is the name and date of birth as shown on the Passport or ID? If not, please describe the reason in the letter.
4 Academic transcript	<input type="checkbox"/>	If not written in English, is the official English translation attached?
		Is the notary seal affixed to Academic Transcript for all the grades earned in the university?
		Is the name and date of birth as shown on the Passport or ID? If not, please describe the reason in the letter.
5 Photocopy of certificate of English Test	<input type="checkbox"/>	If not written in English, is the official English translation attached?
6 A copy of Passport with photo	<input type="checkbox"/>	Is the copy of valid Passport (or National ID) attached?
		If not written in English, French, Portuguese or Spanish, is the official English translation attached?
7 2 ID photos (4cm × 3cm) pasted on application form (Original and copy)	<input type="checkbox"/>	Is the applicant's photo attached on the Application form?